



Painting a farm scene

It's easy!

Painting a spectacular farm scene is not that hard if you break the job up into several simple steps. Just remember to regularly clean your brush and allow wet paint to dry where indicated.

Instruction symbols:



wash brush



let paint dry

Materials

- Newspaper
- Art paper (A3)
- Painter's brush
- Lead pencil
- Coloured markers
- PVA glue
- Acrylic paint : black, white, blue, green, yellow and red
- Scissors
- Cotton wool
- Glass of water
- Sheet of black cardboard
- Photocopy of farm house
- Lid of ice cream container



1 Position the art paper widthways over some newspaper. In lead pencil lightly sketch outlines of the large tree and the distant mountain range as shown in *Figure A*.

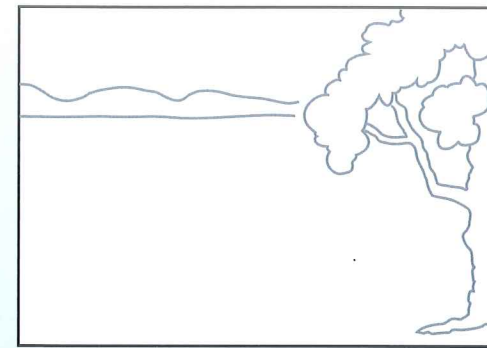


Figure A

You will now do some painting. Use the ice cream lid to mix your colours on. Refer to the **Colour Mixture Palette** on the next page for combinations.

Also remember to take note of any symbols. It is important that you **clean the paint off your brush after each step**. This will stop the colours from mixing into awful shades.

2 Use sweeping, horizontal brushstrokes to paint the sky. Start with light blue at the top and gradually add more white as you work your way down to the mountain tops. *Refer Figure B.*



3 Paint the land with lateral brushstrokes. Begin with red at the bottom of the page and keep adding yellow as you come up to the base of the mountains. *Refer Figure B.*



4 Paint the mountain range in medium blue. *Refer Figure B.*

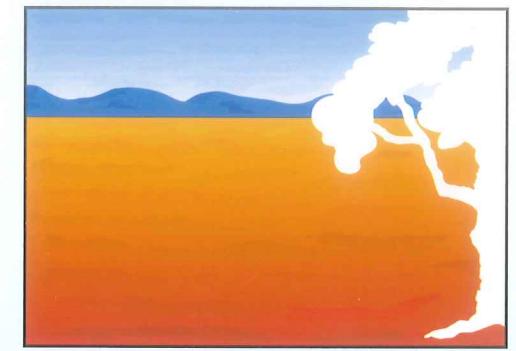


Figure B

5 Paint the tree trunk and the branches in shades of grey. The right side of the trunk and the underside of the branches should be the darkest. *Refer Figure C.*



6 Paint the foliage in shades of green. The upper surfaces should be lighter. While you are working in greens also paint a large bush on the left of the sheet where the farmhouse will be positioned. *Refer Figure C.* Once this is done, leave your painting to dry.

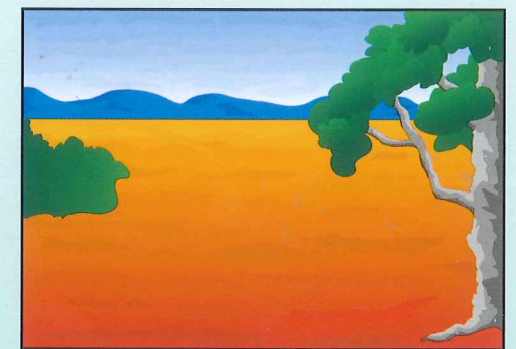


Figure C

7 Colour the separate farmhouse picture in felt-tip markers. Using scissors carefully cut around the image and then glue it onto the art sheet. Position the house on the left in front of the bush.



8 Cut out a number of 1 cm, 2 cm & 3 cm square cardboard chips. Use the edges of these chips to apply the paint in short straight lines. Paint the windmill and the fences black. Paint the clumps of grass in green. Remember, the distant fence and the distant grass clumps will be smaller in size. Leave your painting to dry.



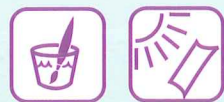
9 Paint the sheep's fleece in white. Add legs and muzzles using a black felt-tip marker. Remember, the closer the sheep appear, the larger their size.

To gain a 3-dimensional texture glue loose balls of cotton wool to the sheep.



10 Add finer details such as the foreground mounds (orange), rocks (brown), distant trees and ground shadows.

Let your painting dry completely.



11 Mount your painting on the sheet of black cardboard with glue. When dry, trim the cardboard so as to leave an even, black frame.

Colour Mixture Palette

red + yellow + black = brown

green + yellow = light green

green + blue = dark green

blue + white = light blue

black + white = grey

red + yellow = orange



Questions

- How many brushes do you need for this procedure?
 - 1
 - 2
 - 3
- What colours do you need for the land?
 - blue and white
 - green and brown
 - red and yellow
- When painting the tree trunk you should refer to
 - Figure A.
 - Figure B.
 - Figure C.
- Cardboard chips are used to
 - apply paint in sharp, short lines.
 - create lateral brushstrokes.
 - mount your painting.
- How many times do the symbols indicate you should clean your brush?
 - 6
 - 8
 - 7
- When it is finished, this will be an example of
 - a painting only.
 - an artwork made from different materials.
 - a collage made with paint.

Vocabulary

Find words in the text that match the meanings below. The word is in the section shown in brackets.

- To roughly draw (1)
- Sideway movement (3)
- Leaves of plants and trees (6)
- Bunches or clusters (8)
- To cut back to the required size (11)

Grammar

Find a **verb** (an action word) in these sentences from the text.

- Lightly sketch the large tree.
- Paint the mountain range in medium blue.
- Glue loose balls of cotton wool to sheep.
- Position the art paper widthways.

Back To The Text...

- When this picture is completed it will
 - show perspective.
 - not show perspective.
- Prediction: What is likely to happen in the future?
 - The artist will visit that farm.
 - The artist will hang the painting up.
- Another good name for this text would be
 - Step By Step Painting.
 - Farmer Joe.

Sequencing

Look back through the card to find what you do first. Choose **a** or **b**.

- Paint the sky.
 - Paint the land.
- Paint the fleece white.
 - Paint the branches grey.

Think About This

- Look at the heading "Painting a farm scene". The tiny dots around the letters probably represent
 - lots of ants.
 - paint splatters.
 - scratches on the paper.
- What illustration do you find on page 3?
 - The farm scene.
 - Figure B.
 - The palette.
- The "let paint dry" symbol shows paper and
 - a pen.
 - a brush.
 - a glass.
 - the sun.

Challenge Option

Drawing: Sketch a cartoon character of your choice.

